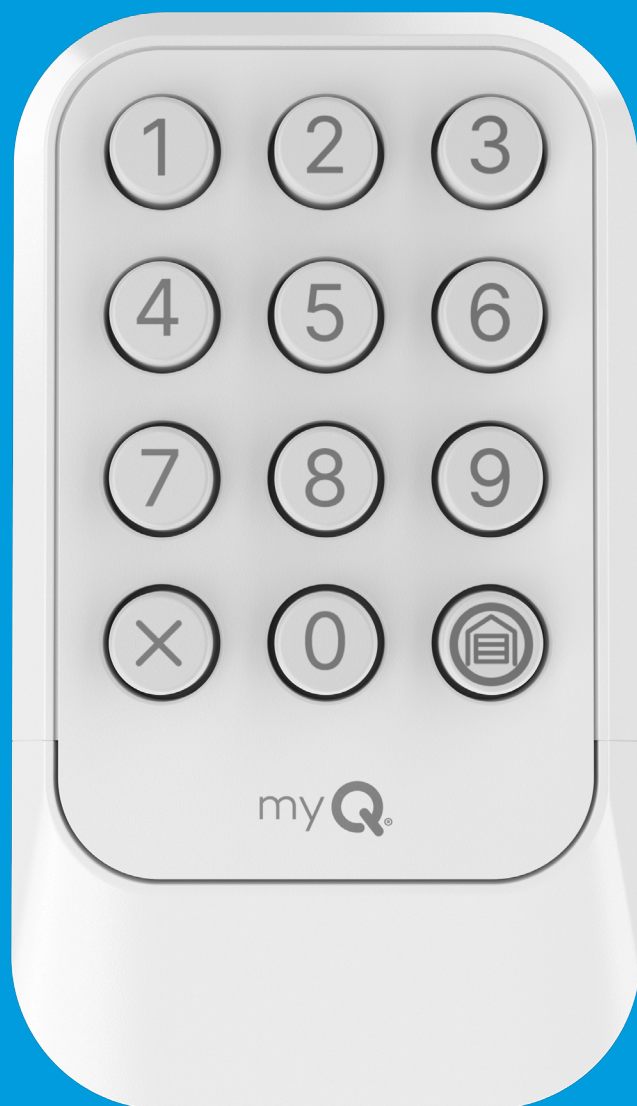




WIRELESS KEYPAD

MODELS: L979S & CH148

Product Manual



Overview

Your wireless keypad is compatible with Security+ 3.0™ products. All Security+ 3.0 garage door openers have a white learn button. The images throughout this manual are for reference only and your product may look different.

WARNING

To prevent possible **SERIOUS INJURY** or **DEATH** from a moving gate or garage door:

- Install Wireless Keypad within sight of the garage door, out of reach of children at a minimum height of 5 feet (1.5 m), and away from **ALL** moving parts of door.
- **ALWAYS** keep remote controls out of reach of children. **NEVER** permit children to operate, or play with the remote controls.
- Activate gate or door **ONLY** when it can be seen clearly, is properly adjusted and there are no obstructions to door travel.
- **ALWAYS** keep gate or garage door in sight until completely closed. **NEVER** permit anyone to cross path of moving gate or door.



WARNING: This product can expose you to chemicals including lead, which are known to the State of California to cause cancer or birth defects or other reproductive harm. For more information go to www.P65Warnings.ca.gov.

IMPORTANT: Program the keypad to your garage door opener prior to installation.

Tap the buttons below to navigate to a specific section of the manual.

Programming the Keypad

Other important information:

[Installation](#)

[Keypad Features](#)

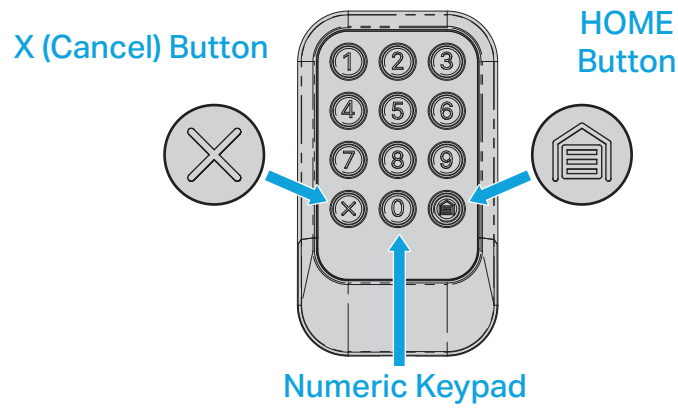
[Replacing the Battery](#)

[Replacement Parts](#)

[Additional Resources](#)

Programming the Keypad

IMPORTANT: Program the keypad to your garage door opener prior to installation.



01 Prepare:

- **Read through the Instructions carefully.**
- Watch out for time sensitive instructions marked with an hourglass icon.
- If at any time you wish to exit the programming steps, press the X button. If you still wish to program a permanent PIN, always start with step 01.
- Make sure the garage door is clear of ALL obstructions.
- Make sure the garage door opener has a working light. It will be needed for programming.



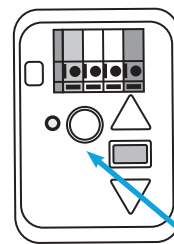
02 Options to Program Keypad to your Garage Door Opener

There are three ways to program your keypad to the garage door opener. Tap your preferred method below.

Option 1: To program your keypad using the myQ app, **tap the myQ app icon.**

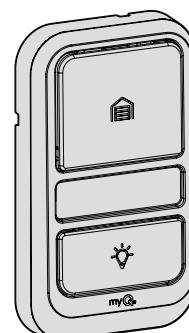


Option 2: To program your keypad using garage door opener's LEARN button, **tap the LEARN button icon.**



LEARN Button

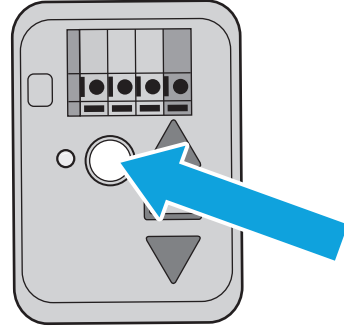
Option 3: To program your keypad using garage door opener's control panel, **tap the control panel icon.**



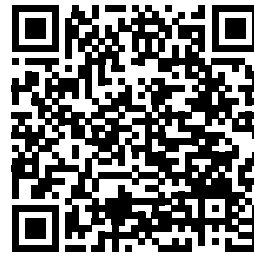
Program Keypad to Garage Door Opener Using the myQ App

HIGHLY RECOMMENDED: Connect your garage door opener to the myQ app and program your keypad to the garage door opener to unlock exciting features that include PIN management, creation of temporary PINs for guest access, and battery charge level.

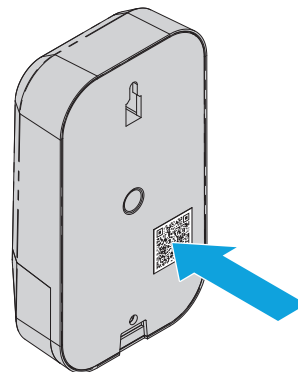
- 01** Check that your garage door opener has a white LEARN button.



- 02** Tap or scan the QR code while using your smart device to download the myQ app. Follow the instructions in the app to connect to your garage door opener.



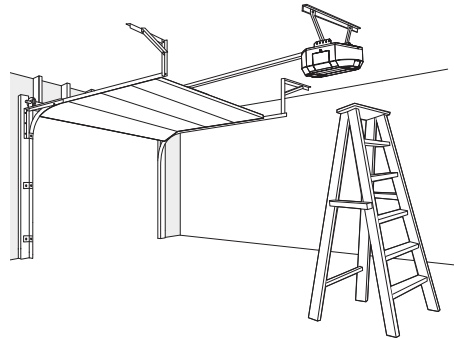
- 03** When your garage door opener is connected, scan the QR code on the reverse side of your keypad, and follow the programming instructions in the myQ app.



Once your keypad is programmed in the myQ app, you can enjoy the benefits of PIN management, setting up guest PINs, notifications, access history, and battery charge level.

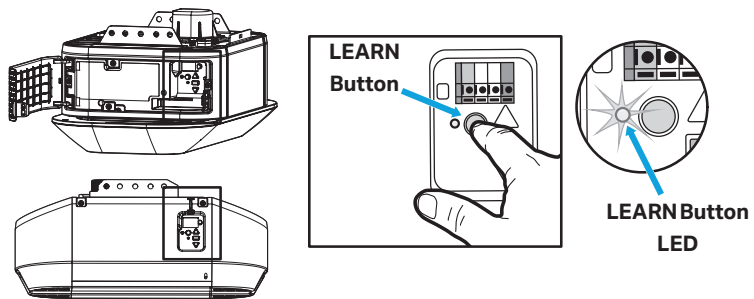
Program Keypad to Garage Door Opener Using the LEARN Button

IMPORTANT: Read through all programming steps before you start.

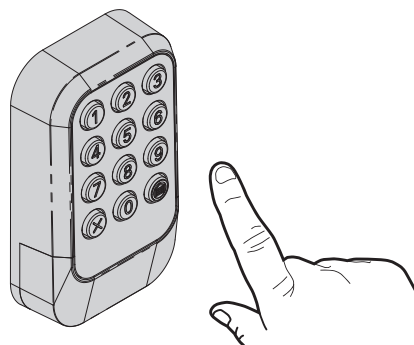


01

Locate the LEARN button on your garage door opener (a ladder may be required). Press and **immediately** release the LEARN button.

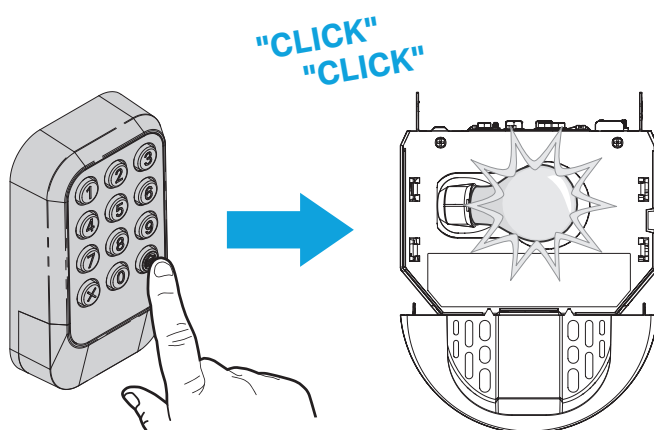


30 Seconds



02

Within 30 seconds of pressing the LEARN button, enter a 4 to 8-digit permanent personal identification number (PIN), then press and hold the HOME button until the garage door opener lights flash and/or two clicks are heard.



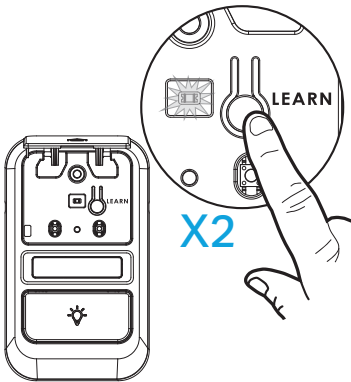
To test your keypad has programmed successfully [tap here](#).

Program Keypad to Garage Door Opener Using the Control Panel

IMPORTANT: Read through all programming steps before you start.

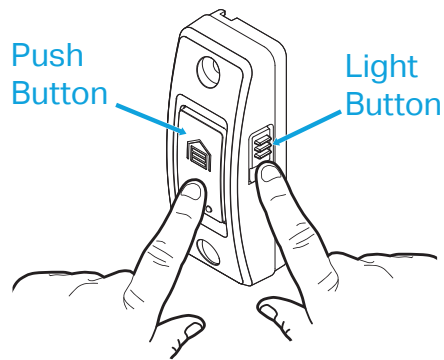
01 Follow the instructions below for your door control panel model to set your garage door opener into programming mode.

Control Panel



Lift the push bar. Press the LEARN button **twice**. The LED on the control panel will pulse repeatedly.

Push Button Door Control



Press and hold the light button, then press and release the push button. The button LED will begin to flash.

Smart Control Panel

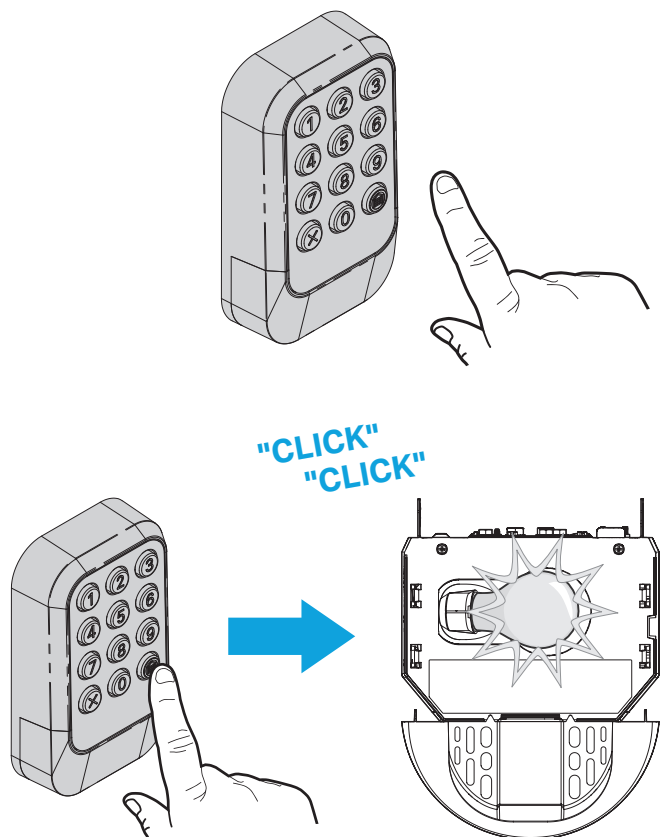


Select **MENU**, then select **PROGRAM** and follow on screen instructions.



30 Seconds

02 Within 30 seconds of completing step 01, on your keypad enter a 4 to 8-digit personal identification number (PIN), then press and hold the HOME button until the garage door opener lights flash and/or two clicks are heard.



To test your keypad has programmed successfully [tap here](#).

Test Your Keypad has Programmed Successfully

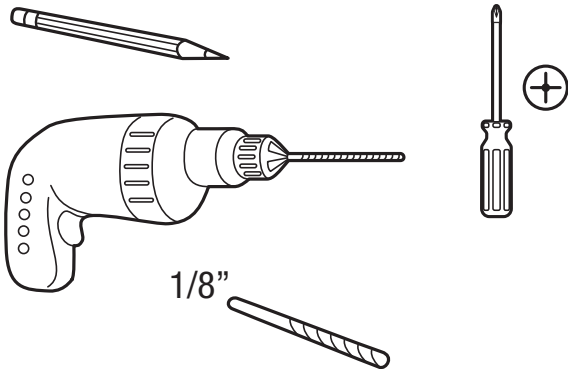
TEST FOR SUCCESS: With the garage door closed, enter the PIN you programmed and press the HOME button. The garage door opener will open the door. If the garage door does not open, wait for the garage door opener's LEARN button LED to turn off (this could take up to 3 minutes). Then repeat the programming steps, go to ["Programming the Keypad"](#).

Now that your keypad is programmed and tested, continue to [Installation](#).

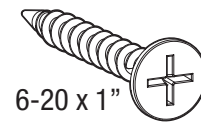
Installation

NOTE: If you currently have a LiftMaster, Chamberlain, Craftsman, or Raynor brand keypad installed at your home, this new keypad may fit with your current keypad's mounting holes. You can avoid drilling new holes if you remove your current keypad and use the same mounting locations.

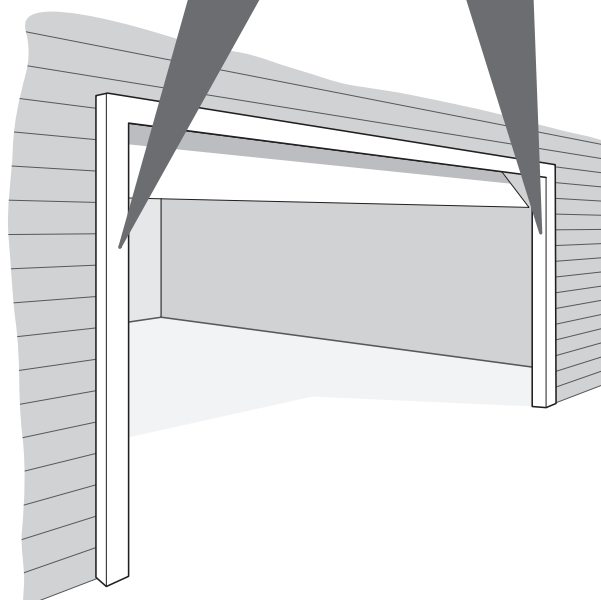
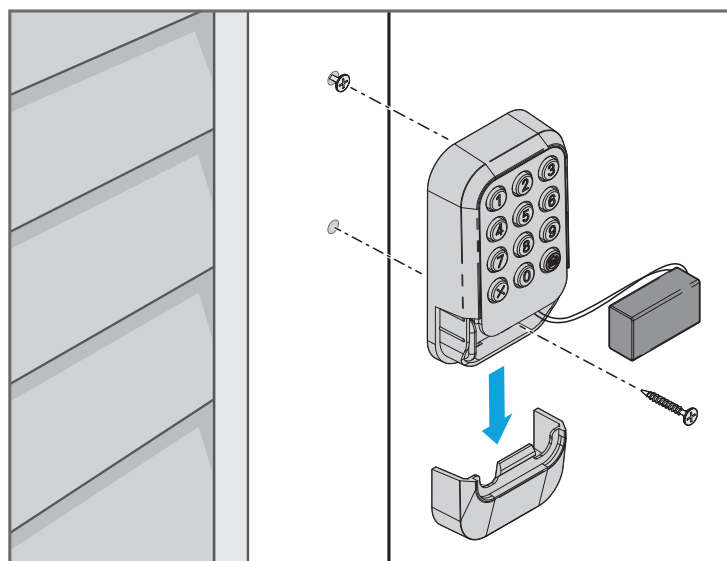
Tools Required



Hardware Included



1. Select a location to mount the keypad at a minimum height of 5 feet (1.5 m). Keep out of the reach of children.
2. Remove the battery cover and battery to access the lower mounting hole.
3. Mark where you want the top mounting hole of the keypad to be positioned and drill a 1/8-inch (3.2 mm) pilot hole.
4. Install the top screw, allowing 1/8 inch (3.2 mm) to protrude above the surface. Position the top mounting hole of the keypad over the top screw.
5. Mark the bottom hole of the keypad (located inside the battery housing) and drill a 1/8-inch (3.2 mm) pilot hole. Install the bottom screw. Do not overtighten to avoid cracking the plastic housing.
6. Reinstall the battery and replace the battery cover.



Keypad Features

The garage door opener activates when you press the personal identification number (PIN) and HOME button. The keypad will flash for 15 seconds. During that time the HOME button can be used to stop, start, or reverse the door.

If you enter the intended PIN number incorrectly, press the X button to cancel (this can also be done after pressing the HOME button). Then enter the correct PIN number and HOME button to activate the garage door opener.

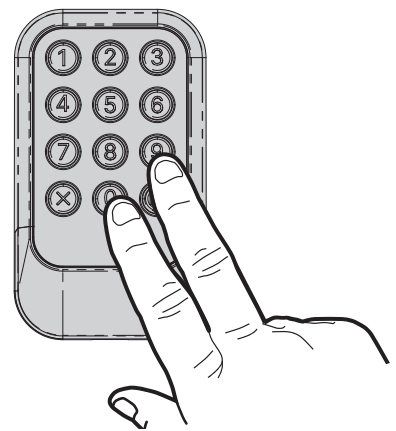
Multiple PINs can be programmed to your garage door opener. To add additional PINs, follow the same programming instructions as the first PIN. Up to a maximum of 4 PINs per garage door opener can be programmed locally at the keypad. These 4 PINs are managed on a first in, first out basis. To add more than 4 PINs to your garage door opener, use the myQ app. For instructions to connect to the myQ app [tap here](#).

One Button Close

CLOSE your garage door by pressing **only the HOME button** instead of entering your PIN.

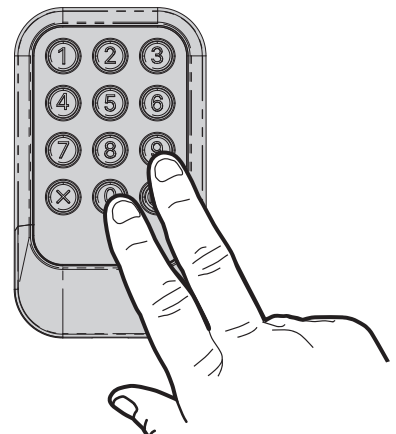
To deactivate one button close:

Press and hold the 0 and 9 buttons for 10 seconds. The keypad LEDs will flash **four** times when the one button close feature is deactivated.



To activate one button close:

Press and hold the 0 and 9 buttons for 10 seconds. The keypad LEDs will flash **twice** when the one button close feature is activated.



Change an Existing Permanent PIN

NOTE: The myQ app is required for changing an existing permanent PIN for garage door openers with a white LEARN button. For instructions to connect to the myQ app [tap here](#).

Program a Temporary PIN

NOTE: The myQ app is required for setting temporary PINs to provide guest access with your garage door opener. For instructions to connect to the myQ app [tap here](#).

Replacing the Battery

⚠ WARNING

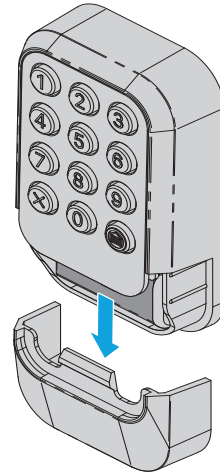
To prevent possible SERIOUS INJURY or DEATH:

- NEVER allow small children near batteries.
- If battery is swallowed, immediately notify doctor.

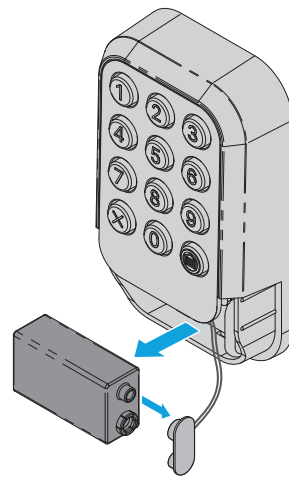
The LEDs on your wireless keypad will become dim or stop flashing when the battery is low and needs to be replaced, or you may have noticed a low battery charge level in the myQ app. Replace the battery with a new 9V battery. Dispose of the old battery properly.

To replace the battery, follow the instructions as shown below. Reference the illustration below for each step.

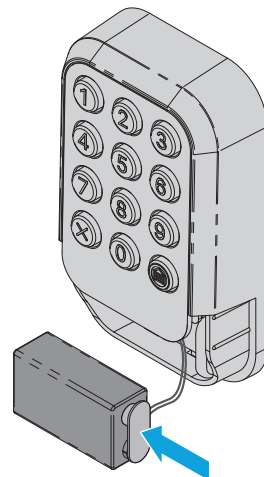
01 Slide the battery cover down to remove.



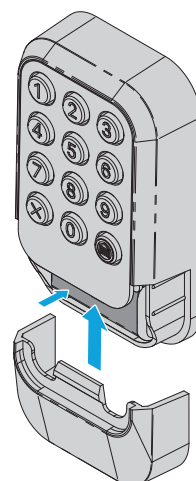
02 Pull the battery out of the housing and remove the battery from the keypad power leads.



03 Connect the new battery to the keypad power leads.



04 Place the battery inside the keypad housing and replace the battery cover.



Replacement Parts

Description	Part Number
Keypad Battery Cover	041-0495-000

Additional Resources

One Year Limited Warranty

The Chamberlain Group LLC ("Seller") warrants to the first consumer purchaser of this product that it is free from defect in materials and/or workmanship for a period of 1 year from the date of purchase.

For more information, visit www.myq.com/warranty

Contact Us

For additional information or assistance, please visit: support.chamberlaingroup.com

NOTICE: This device complies with part 15 of the FCC rules and Innovation, Science and Economic Development Canada license-exempt RSSs. Operation is subject to the following two conditions: (1) This device may not cause harmful interference, and (2) this device must accept any interference received, including interference that may cause undesired operation. Any changes or modification not expressly approved by the party responsible for compliance could void the user's authority to operate the equipment.

HOW TO ORDER REPAIR PARTS

DEVANCO  **CANADA**

19192 HAY ROAD, UNIT Q
SUMMERSTOWN, ON, K0C 2E0

TOLL FREE **1-855-931-3334**
WWW.DEVANCOCANADA.COM

**WHEN ORDERING REPAIR PARTS
PLEASE SUPPLY THE FOLLOWING INFORMATION:**

- ✓ **PART NUMBER**
- ✓ **DESCRIPTION**
- ✓ **MODEL NUMBER**

©2025 The Chamberlain Group LLC

myQ and the myQ logo are trademarks, service marks, and/or registered trademarks of The Chamberlain Group LLC. All rights reserved. All other trademarks, service marks and product names used herein are the property of their respective owners.

The Chamberlain Group LLC, 300 Windsor Drive, Oak Brook, IL, 60523, United States
See chamberlain.com/patents